

TRACK

Cold and rainy weather characterized the 1935 track and field season and consequently the boys did not get a chance to really show what they could do. The weather made it impossible for coaches to get their squads into the best of condition and the season was climaxed by a state meet that was held in a down-pour of rain.

The State Meet

The 1935 state championship meet was held on the Wichita University track and field, the first time a state meet has ever been held in Wichita. Excellent facilities were furnished but the weather prevented the attendance of a good crowd and, of course, no records were broken. In spite of the rain, however, the attendance was better than it has been for several years.

The meet was won by Wichita North with a total of 19 points. Arkansas City was second with 15.3 points and Ford third with 14. Riegel of Ford was the high-point man, winning first places in the 100-yard dash and the broad jump, and second place in the 220. Wilkes of Wichita North scored 11 points with a first place in the 220-yard dash and two seconds in the 100 and the broad jump.

Four schools, Milton, Ottawa, Wyandotte and Emporia, tied for fourth place with 8 points each. Fowler won 7 points, Midian and Pratt 6 each, Argentine 5.3, and Manhattan, Kackley, Conway Springs, Rosedale, Alna and Eskridge each scored 5. The total of 176 points awarded in the meet were divided among 50 different schools.

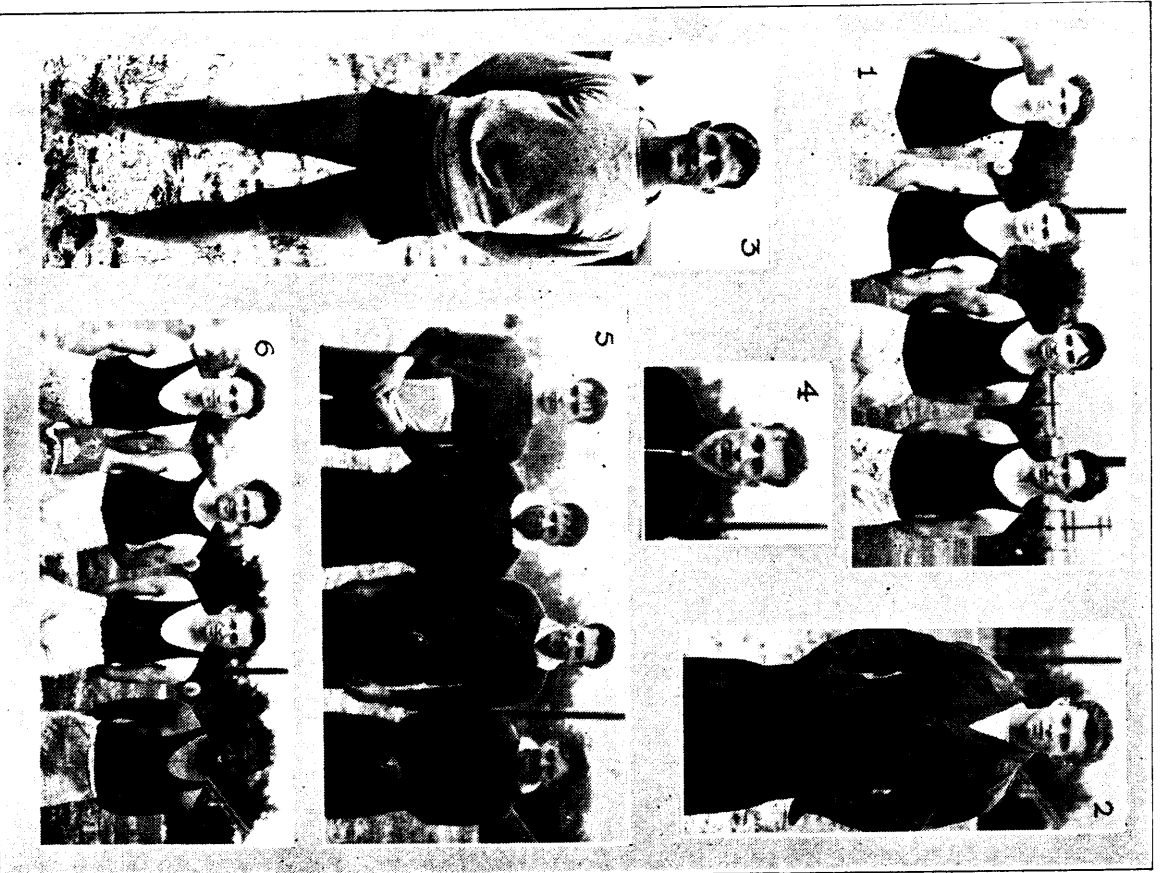
FINANCIAL STATEMENT OF STATE AND REGIONAL TRACK MEETS, TENNIS AND GOLF TOURNAMENTS

State Meet--	
Entry fees and receipts.....	\$324.85
Regional Meets--	
Anthony	75.00
Furka	105.00
Fowler	58.50
Independence	57.50
Leavenworth	81.50
Manhattan	121.00
Norton	55.50
Russell	74.50
	\$953.35
EXPENSES	
State Meet--	
Medals and trophies.....	\$241.75
Officials' expenses	65.25
Miscellaneous	30.75
Board of Control expenses.....	126.90
Regional Meets--	
Medals and trophies.....	435.20
Officials' expenses	7.00
Tennis balls	44.98
Balance	\$ 1.52



STATE TRACK AND FIELD CHAMPIONS

1. Milton, 1-mile relay team.
2. Wilkes, Wichita North, 220-yd. dash.
3. Patimore, Rosedale, low hurdles.
4. Kelley, Midian, javelin.
5. Miller, Conway Springs, mile run.
6. Nelson, Kackley, 880-yd. run.
7. Wyandotte 880-yd. relay team.



1. Alna 880-yd. relay team. 2. Riegel, Ford, 100-yd. dash and broad jump. 3. White, Arkansas City, shot and discus. 4. Brown, Manhattan, 440-yd. dash. 5. Eskridge medley relay team. 6. Limporia medley relay team.

STATE TRACK AND FIELD CHAMPIONS

OFFICIAL STATE TRACK MEET RECORDS

EVENT	RECORD	HELD BY	YEAR EST.
100-yd. dash	9.9 sec.	Holder, Marion	1928
220-yd. dash	21.6 sec.	Hoeker, Minneapolis	1927
440-yd. dash	49.4 sec.	McCaskill, Wichita North	1935
880-yd. run	1 min. 58.2 sec.	Blackmore, Eldorado	1934
1-mile run	4 min. 28.4 sec.	Cunningham, Elkhart	1930
120-yd. high hurdles	15.5 sec.	Byers, South Haven	1927
220-yd. low hurdles	24.1 sec.	Wilhelm, Arkansas City	1932
Pole vault	12 ft. 8 1/4 in.	Landers, Arkansas City	1933
Shot put	58 ft. 3 1/8 in.	Girdley, Wichita	1929
High jump	6 ft. 3 in.	Coffman, Ford	1929
Broad jump	22 ft. 11 5/8 in.	Dees, Lorraine	1929
Discus throw	134 ft. 9 7/8 in.	Madsen, Hutchinson	1928
Javelin throw	184 ft. 1/2 in.	Papin, Iola	1933
1/2-mile relay—Class A	1 min. 30.5 sec.	White, Pleasanton	1930
Mile relay—Class A	3 min. 31.3 sec.	Walton, Parsons	1928
Medley relay—Class A	3 min. 27.2 sec.	Wichita North	1932
		Wichita East	1932
		Wyandotte	1932
		Kansas Vocational School, Topeka	1932
		Wyandotte	1931
		Kansas Vocational School, Topeka	1932
		Wichita East	1932
		Kansas Vocational School, Topeka	1932
		Wichita North	1933

WINNERS OF STATE TRACK MEETS

Year	Meet Held at	Won by	Year	Meet Held at	Won by
1911	Emporia	Norton	1924	Emporia	Winnfield
1912	Topeka	Marion	1925	Emporia	Winnfield
1913	Manhattan	Wichita	1926	Emporia	Wichita
1914	Manhattan	Wichita	1927	Emporia	Hutchinson
1915	Manhattan	Norton	1928	Emporia	Hutchinson
1916	Manhattan	Topeka	1929	Emporia	Wichita East
1917	Manhattan	Wichita	1930	Manhattan	Wichita East
1918	Manhattan	Abilene	1931	Emporia	Wyandotte
1919	Manhattan	Abilene	1932	Emporia	Arkansas City
1920	Manhattan	McPherson	1933	Emporia	Wichita North
1921	Manhattan	Winnfield	1934	Emporia	Ks. Voc. School
1922	Emporia	Haviland	1935	Wichita	Wichita North
1923	Emporia	Winnfield			

RESULTS OF 1935 STATE TRACK MEET—WICHITA

TRACK EVENTS	FIRST	SECOND	THIRD	FOURTH	TIME
100-yd. dash	Riegel, Ford	Wilkes, Wichita N.	Rickman, Wichita East	Bogan, Russell	10.5
220-yd. dash	Wilkes, Wichita N.	Riegel, Ford	Moore, Atwood	Collins, Burrton	24.1
440-yd. dash	Brown, Manhattan	Pratt, Morland	Locke, Hutchinson	Cross, Midian	53.4
1-mile run	Nelson, Kackley	Oberholser, Lost Springs	Redding, Madison	Goldsmith, Melvern	2:10.3
120-yd. high hurdles	Miller, Conway Springs	Smith, Portis	Small, Englewood	Preston, Ford	4:49.6
200-yd. low hurdles	Shepherd, Pratt	Goldsmith, Melvern	Moffitt, Arkansas City	Lawrence, Wichita North	16.2
1/2-mile relay	Pattimore, Rosedale	Kirch, Abbyville	DeHart, Wichita North	Ewalt, Augusta	24.3
Class A	Wyandotte	Emporia	Wichita East	Salina	1:35.9
Class B	Alma	Milton	Burns	Gardner	1:41.4
1-mile relay	Wichita North	Wyandotte	Sumner	Topeka	3:42.9
Class A	Milton	Chase County	Trousdale	Burns	3:47.5
Class B					
Medley relay	Emporia	Winfield	Marysville	Salina	3:43.7
Class A	Eskridge	Fowler	St. Marys	Englewood	3:49.5
Class B					
FIELD EVENTS					
Pole vault	Burke, Ottawa } Long, Fowler }				11 ft. 6 in.
Shot put	White, Arkansas City	Cushenberry, Atchison	Whittacre, Ottawa	Eaton, Chanute	49 ft. 10 3/4 in.
High jump	Buckman, Argentine	A. Cain, Arkansas City	Hummell, Ellsworth	Kite, Eureka	6 ft. 2 in.
Discus throw	White, Arkansas City	Smith, Anthony	Walters, Burrton	Steward, Pratt	123 ft.
Javelin throw	Kelly, Midian	Bell, Salina	Whittacre, Ottawa	Durand, Junction City	159 ft. 6 in.
Broad jump	Riegel, Ford	Wilkes, Wichita North	Hammond, Junction City	Kowing, Winfield	22 ft. 7 3/4 in.